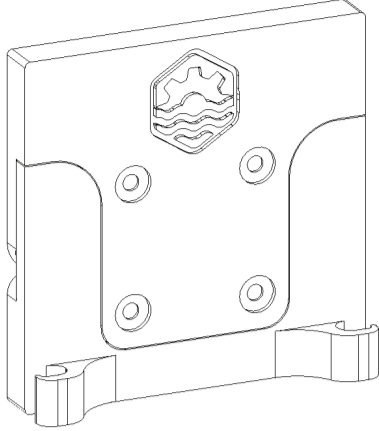


# MANUAL

## Solenoid Valve Mount

SKU SLD-VM



### FEATURES

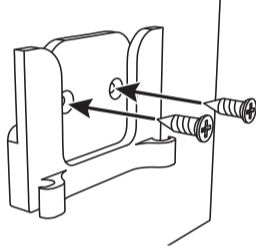
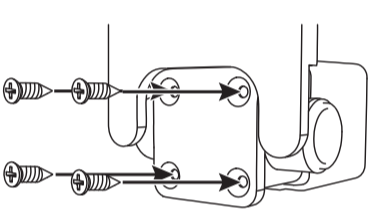
- Tough Construction
- Corrosion Protection
- Cable Management
- Slim Profile
- Versatile Compatibility

### FUNCTIONS

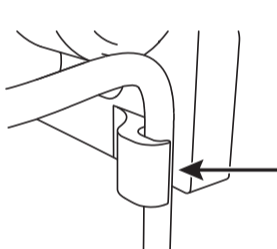
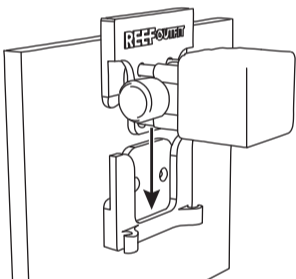
Our solenoid valve mount is meticulously designed to provide a secure and accessible housing for your solenoid valve. Its primary functions include keeping your valve safe, dry, and easily visible, while also ensuring your RODI tubes are neatly organized and your cable management is improved.

### INSTALLATION INSTRUCTIONS

1. Screw the valve to the top part of the mount using the supplied screws
2. Screw the bottom part of the mount to the mounting surface using the supplied screws

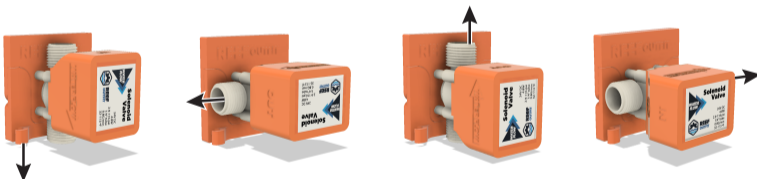


3. Slide the top part onto the bottom part
4. Secure the cable in the cable clip



### TIP

You can mount your solenoid valve in four different 90 degree angle increments to match the water flow direction that best suits your setup.



### SAFETY GUIDELINES

The solenoid valve mount is safe for the saltwater aquarium environment. Care should be taken when installing the mount to make sure it is clear of obstructions and away from electrical components to avoid water damage and the risk of electrical shock.

### FREQUENTLY ASKED QUESTIONS

- Q . Is the solenoid valve mount compatible with my solenoid valve?**
- A. The Reef Outfit solenoid valve mount is compatible with most 0.25 inch tube solenoid valves available on the market today, including solenoid valves from brands such as Reef Outfit, Neptune Systems, Iccap, Hydros and XP Aqua and more.
- Q . What tools do I need to install my solenoid valve?**
- A. You will need a P2 Phillips screwdriver.
- Q . Where should I install my solenoid valve?**
- A. You should install your solenoid valve mount on a vertical dry spot, safe from water splashes and as far as possible from saltwater to avoid corroding your solenoid valve.

### TROUBLESHOOTING

#### Problem

The top part of the mount won't slide down fully into the bottom part

#### Solution

Make sure to drive the screws completely until the head of the screws are flush with the mount surface.

### CONTENTS

The solenoid valve mount is made of ABS plastic and includes six stainless steel screws for mounting.

### WARRANTY

The solenoid valve mount is guaranteed against manufacturing defects. If you need product support please visit <https://reefoutfit.com/contact-us/>

